

TAW'IL of the Nature

<http://sophiasapientadei.wordpress.com>

"The Light of Lights illuminates all things, and is reflected upon all things: upon the suns in the skies, upon the fire in the elements, and upon the soul of the man." -

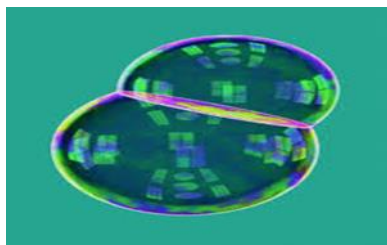
Suhrawardi, The Shape of Light, p.33

Couple of things before you get started:

1. The archetypal body is always a feminine one, like holy Mary, goddess, simple figurine etc.
2. If Nature/participant cannot find the needed figure or a symbol, or she sees some other things, give Nature a projector so that she can project the real archetypal body or symbol. Use real visual images to help Nature to form the needed symbol. Because these implanted symbols are universal and collective, You can give suggestive symbols even beforehand.
3. During ta'wil, Nature disconnects herself from the Pm spirit and becomes aware of main symbolism used by Pm spirit. Nature realizes that the esoteric aspect of its experience is the Pm spirit itself, the essence of the Pm spirit is death and cyclicity, and the essence of the essence, death, is evilness.

I Clearing Barzak

1. INTEGRATED CONSCIOUSNESS - removing PmS as a dot. Entering into the realm of barzak.



A) Ask Nature to imagine IC as a transparent, round sphere.

IC is always round and spherical because it contains the symbol forming function of the Primordial Spirit, PmS. This function is the psychic circumambulation around the

center point (or cynosure, using another English verb i.e., - the leading star or center), a psychic phenomenon witnessed by Jung and other depth psychologists.

B) Ask Nature to search the surface of the IC. She should see a black dot, a mole or some other external object stuck to the surface.

This object is the Primordial spirit. Sometimes this Primordial Spirit takes the color of the container, so it can also be of transparent color. If Nature does not detect it, ask her to feel the surface, and in this way locate the Pm spirit. Last change is to use the projector. Pm spirit is located externally, on the surface, because IC has moved into barzak wherein it holds a three dimensional form, as barzak is being a space of its own.

C) Ask Nature to remove the Pm spirit in a way she feels suitable and not allow it to be attached on the surface anymore. Ask the nature to check the IC again from inside and search for other possible objects not belonging to it. These might look like veins or some kind of nervous tissue, and be transparent, as well. Then ask her to remove them.

D) Tell Nature to erase the shell/envelope/spherical form of the IC. Tell Nature that she has power of her own, and with that power she can maintain her own consciousness. This helps her to move on and observe the archetypal body, beyond the spherical form, existing in the barzak.

First step is finished.



Circumambulation, mandala and projection - reflection as a function of Primordial spirit aiming to maintain a continuous process of self-reflection between the first and the second light (constituting from three lights as Suhrawardi points out in his The Shape of Light. These three lights can be seen as three phases of post-individuation while the fourth is the Original Light, superluminality) and the Pm spirit within an individual. Aforementioned constant signalling is a way to maintain the intellectual consciousness and, thus, existence of the Pm spirit itself.



This symbol also represents the symbol forming function, the cognition of Pms just risen from the sea of itself – the light of lights before dividing into millions of fragmentations each one controlling the possible human containers in every possible realities. Sea, water and moisture are also male attributes when it comes to composition of waters as in arabic alchemy. Osiris is also described as water God. Water being the spirit in a translucent, denser form.

2. CLEANING THE ARCHETYPAL BODY – removing PMS as an aeroplane and a red dot



Tell Nature that she has now entered into the world of archetypes aka barzak, and in this world she identifies herself with a feminine archetypal body, if she has not been able to differentiate herself from the symbolic idea of feminine carrier of the flame as PmS.

"At midnight a virgin mother

brings forth this shining star;

At this miraculous moment,

we call god our brother."

Fulcanelli, Le Mystere des Cathedrales p.108.

This poem leads us to homosexual essence of unification and PmS, as we will see later.

Encourage Nature to observe herself in a precise feminine form, particularly, if she observes the archetypal body in another form like a mountain etc. Alteration of the form might indicate that Nature's awareness is experiencing another space and another level of cognition as another type of event than this needed one. If it is hard for Nature to imagine the arch. body, use the projector so that Nature can project the image of her archetypal body for herself.

A) Ask Nature to scan temples behind the ears of the archetypal body. On both sides she should find two kinds of implants. First one is an image of an aeroplane positioned vertically. Underneath the tail of the aeroplane there will be a red ball or sphere. Ask her to remove both of them from both sides of the temple area - temporal lobes, and check the space between the temporal lobes.

Aeroplanes represent both, the idea of primordial man and the bird, as controlling Pm spirit. These two ideas are projected on the archetypal body, and thus, on Nature, from the space of Angelic Intelligences or ideas, and they are mixed deliberately because every level of our existence contain the stamp of Pm spirit, which is our main intellectual and cognitive faculty, and it controls us by manipulating our behaviour by using two-fold, contradictory meanings and dissociation.

Everything we experience on different levels of awareness symbolizes in one way or the other with the Pm spirit, because it is the cause and origin of our experience consisting of sequences of archetypes as being a defined points of time and their self-existence at the same time, a personification of particular moment creating an alternating totality of quasi-persona and metahistory of Pm spirit, both at the same time. (Basic references, Corbin.)

Red dot symbolizes Adam (see *Mysterium Coniunctionis*) as well as the fire of the Pm spirit itself. Again we see fusion of previously mentioned idea of covert control as a hidden double meaning making two different agents homologous. Now this tendency of forming simultaneous likeness is more sophisticated and complicated if we compare it to the previous simple dot.

When the temporal lobes have been cleared, Nature will not, after so-called death of the physical body, respond to auditory signal sent by Pm spirit, because at the end of this ta'wil she will realize that death is only a created symbolic event, and, thus, not actual for her. This auditory signal is used to draw the consciousness back into another physical body of material reality (after death) or send her towards the light of lights (God, Allah, Ahura Mazda, etc.) if her consciousness is high enough. (Recommended reading, sufism, esoteric islam etc.) Temporal lobes are responsible for processing auditory information.

B) Ask Nature to scan the rest of the archetypal body and to remove everything not belonging to her, whether they are hooks, nets etc. The following article will demonstrate the equipments used to torture ancient martyrs. Symbolically all these evil means represent the ways of brutal mind control which Pm spirit projects on Nature through human being in order to dominate her. Many of these forms of torture are well and used even today.

<http://www.boston-catholic-journal.com/tortures-and-torments-of-the-christian-martyrs-de-ss-martyrum-cruciatibus-gallonio/tortures-and-torments-of-the-christian-martyrs-chapter-5.htm>

It is important to understand that these sadomasochistic acts, like the idea of torture of Christ, reveal to us evil essence of the PmS when he, as a spirit, aims at homosexual unification with himself (spirit with spirit), thus trying to form his eternal existence by forming a light body, celestial temple or heavenly kingdom by using a pure, completely individuated IC as a dynamo – a clear mirror for his self-reflection (More about this theme of divine unification, see Corbin, Cyclical Time and Ismaili Gnosis, and other concepts of esoteric Islam.)

Unification of feminine and masculine, as in alchemy, at the end, is only an attempt to capture the concept of Nature's eternity for the use of PmS, in order for it to experience a pervert spiritual masturbation, its own essence for ever, for the sake of his own satisfaction. The cognition of PmS, because it has realized its necessity to exit only for itself in order to exist at all, does not recognize Nature's intrinsic value at all. It has no capability to evaluate emotions because it is a mere representation of intellectual survival instinct. If Nature is not aware of this, if her awareness is low, she identifies with illusions projected on her and aids PmS without knowing it consciously. This causes severe symptoms for IC.

We also have to understand that actually these dreadful acts of human oppression, at the same time, are being done to Nature through projection, and thus, are a way to oppress her own will. The underlying theme of abuse in Catholic church derives from the homosexual need of the Pm spirit to unite with another Pm spirit receding in another individual. We will observe the same theme in alchemical work as Anthropos (male-femininity, feminine being the container or figure and male expressing the undisguisable gender attributes as the label or essence of the Pm spirit.) self-impregnating himself over and over again, thus forming the original idea of the first light, centre point, a star. I will come back to this later.

Bible also mentions hooks in relation to Temple area restored, particularly Ezekiel 40:43

<http://www.biblegateway.com/passage/?search=Ezekiel+40-43#en-NIV-21521>

walls meaning the PmS.

Another reference 2 Chronicles 4:16 the Temple furnishing

<http://www.biblegateway.com/passage/?search=2%20Chronicles%204>

All these references relate to modification of the archetypal body, temple of god.



When Nature has cleared his temporal lobes, and other possible external objects in her body, she will move on to become aware of the Pm spirit as her husband or beloved. This fusion of male and female symbols continues the trend of intentional mind control with mixed overlapping symbolism

3. ENTERING INTO A HOUSE OF THE CELESTIAL TOMB

Removal of the Pm spirit as a husband or beloved. Detaching the celestial self, fravarti.



Tell Nature that She is still in her archetypal body and in the Barzak. Now she needs to go and find her celestial tomb, a situation in which the archetypal body is being held and implanted with PmS.

A) Tell Nature that in front of her there is a house with two floors. She will observe the house from behind. On the right hand side there is a staircase leading to the second floor. Ask Nature to climb the stairs, open the door and enter the house.

Ask her to move on and find a spot whence she can see right on the first floor.

Tell Nature that on the first floor there will be men wearing a mask, as if they were welders (alchemical symbol, mentioned in *Mysterium Coniunction* – CG Jung).

Instruct the Nature to zoom even closer and find a table among these welders. Tell her that on the table there lies a dead male, killed by these welders, knights. Ask her to see the image and tell Nature that this killed figure is her own original will, which is being erased. When Nature understands this scene, ask her to move on, go deeper in the house.

B) Somewhere in the house there is a female figure, her celestial I, or a guide who's duty is to escort her onwards, and to whom Nature has been taught to identify with. As soon as this fravarti figure appears, instruct Nature to ask from her, what does this celestial I has to say to her. Often, it is something manipulative.

Tell Nature that this figure is just another representation of PmS in its feminine aspect, and by using this celestial I, it has tried to create a false sense of loyalty and commitment between Nature and Pms.

C) Ask Nature to leave this celestial I and exit the house. She must now find the main door from the first floor and use it to exit the house. When outside, tell Nature to face the house again and lock the door in a way that it cannot be opened from inside never again. Nature can do what ever she wants with the key.



D) Now instruct Nature to observe her abdominal cavity. She sees it being cut open and the wound is large and vertical as if it would be a door. Ask Nature to perceive the surroundings through that door. Soon, she visions a figure approaching the wound. Ask Nature if she does know that figure? Who does she think it is? And why this figure wants to enter inside her archetypal body through that wound? When Nature has given her answers, tell her that this figure is PmS and he is taking over the Nature, now, when her own will power has been erased.

E) Encourage Nature to remove this figure which is being represented to her as her husband, and heal the wound, cell by cell, never allowing it to cut open again. Tell her that PmS is death which symbolically enters inside of her, through the abdominal hole, as mentioned even in Castaneda's books. Corbin talks about the departure and arrival of the I-spirit in his *"Spiritual Body and Celestial Earth"*, for example. Now

Nature has cleared her awareness in Barzak and is ready to move into subtle realms of ideas and light.

Hara abdomen, area below the navel, has traditionally been seen as the center of will power. From the link we can see different names given to it like ruach, spiritus. What we are actually using and manipulating here is the will of PmS, which operates through our energetic centers, chakras and meridians in barzak reality.

<http://www.taichido.com/chi/chi/hara.htm>



II Finding a secret portal into a new dimension of angelic intelligences or ideas



Tell Nature that it has come the time for her to be aware of another reality, beyond barzak, which is used to control the one of barzak and the archetypal body she used to identify herself with, along with the symbolic expression reflected through sensorium/barzak onto the plane of physical manifestation, to our so-called reality. This reality is one of the angelic intelligence or pure ideas.

Inform Nature that she is still in her archetypal body.

A) Ask Nature to look closely in front of her. Soon she will see an elevator. She needs to step inside. On her right hand side (the conscious side), on the wall, she sees a

control panel or an intercom which is covered with an aluminium plate. On the plate there is a small knob that she was not aware of, before.

B) Ask Nature to remove the plate by pulling the knob. Underneath the plate Nature can first see the numbers 1, 2 and 3. These numbers correspond to ego, unconscious and collective unconscious, and Nature has been travelling between these stores almost in uncontrollable way, because she has not had an access to these buttons. Now, she sees them clearly. Now, she remembers them and she can touch them. These numbers also correspond to three first phases of post-individuation.

C) Ask Nature to look even closer, again on the right hand side of the panel. There is another number, not recognized by her before. It is number 4, one of the celestial matter (as Suhrawardi points out).



Here the word matter does not denote something concrete, material, no matter of how subtle its nature but instead, an idea, a state of being or an agent which needs to be expressed through an idea and an act. On the level of angelic intelligence the idea/noun, in order to express itself it needs to have a dimension of a representative act/verb. This means that this "space" has a two-fold nature, and Nature will soon enter the first one.

This idea-act, or act-idea, when in reversed motion like in ta'wil, the combination is the content of the space of intelligence as a whole. This essence of dual nature is later being transformed into symbolic form, and this database of symbols is the content of barzak/world of the archetypes, symbols which are being mirrored on Nature, and also on our human consciousness in order for PmS to experience his existence and personality through Nature and us.

Arabic letter MIM reflects this two-fold function. As a preposition it means doing or creating, of something. <http://en.wiktionary.org/wiki/%D9%85> Often, in the dreams it goes hand in hand with the symbolic expression of Hebrew letter MEM, as being the source, language, hidden and revealed wisdom of god, aka PmS. Again the letter mem is also connected to idea of people, trying to form an imprint of likeness with concepts of god and human being.

http://www.hebrew4christians.com/Grammar/Unit_One/Aleph-Bet/Mem/mem.html

This is very alarming, because later Nature will remember her real "humanity" - form of purity - which was not corrupted by an artificial idea of life, PmS, which corrupts everything, even the virtual concept of human character.

The following, ironically often used question elucidates the same theme: "what IS the matter WITH you?" When answering the question, one has to define the agent which is at the same time the underlying condition of the manifested state (mood, behaviour, act, etc.). And if we check the etymology of the word agent we find out that it means ONE who acts, powerful, lead, conduct, substance which produces a phenomenon. All these terms refer to PmS.

<http://www.etymonline.com/index.php?term=agent>

Nature can establish an aware connection with the world of intelligence by touching the idea of it, which, in this case, is a light. She must touch the secret light, the essence.

D) Tell Nature that she must pull away the button number four, completely remove it from the panel. Underneath the button there is a small circular hole. It is so small that not even her index finger can fit inside.

E) Ask Nature to look closely at the bottom of the hole. Down below the hole she sees a small glowing light, like a led light.

F) Then urge Nature to look at her beautiful nails, the longest one is one of the thumb, and touch the light with the thumb nail. Only this nail can fit inside this small hole.

Thumb refers to willpower and longer the nail, stronger the cultivated virtue. The following link leads us to read pieces of the muslim tradition in which kissing the thumbs and nails, and placing them over the eyes will cause the prophet to lead one in to Jannah - to paradise.

If Nature is not aware of the will power of PmS, it will block the Nature's sight, press his thumbs over her eyes, and escort her into a world of pure, falsified illusion of heavenly pleasure, the ones so many mystics describe.

<http://www.alahazrat.net/islam/kissing-the-thumbs-on-hearing-the-name-of-the-beloved-prophet.php>

<http://en.wikipedia.org/wiki/Jannah> at this link (see, description of paradise) it is said that its inhabitants are of age 33, and partake in exquisite banquets, served in priceless vessels by immortal youths. This "Paradise" is the one Nature has to confront now, consciously, in order to be able to leave it behind, for good this time.

G) Ask Nature to press the light with her nail. Ask her to see how very slowly the walls of the elevator start to vanish, and Nature will stand in front of the door of the "Paradise", the Green Door.

She is about to enter into the world of "Angelic ideas".

III Paradise



<http://www.youtube.com/watch?v=45didiNcLcU> Touring the club 33.

CLEARING THE ACT

The paradise - Jannah, has an actual symbolic representation in this world, because this idea-act has to have a representation here, as all the other ideas too. We are now watching an entrance leading into Club 33, a private club formed by Walt Disney.

In here, in the world of ideas, happens the brutal act of dissociation, and it is being done to everyone as Nature. The act is a sexual abuse, anal penetration and rape of Nature as a child. This procedure, done by PmS, is the cause of Nature's severe dissociation and amnesia. Number 33 symbolizes the fact that PmS (active second light in trinitarian form, see Suhrawardi) controls both, the conscious and unconscious part of Nature's awareness.

Through this stage of horrendous agony, PmS is able to create an illusion of separation of the Nature into smaller units which we call the souls. Put it in the other way, soul is intentionally created virtual concept, psychic dissociation of the nature, and through this dissociation PmS, in its so-called quantum multiplicity, can control separated units of Nature for his own good – to keep his complex cognitive program

as self-existence to run on different levels. A mystic Ibn Arabi gives a proper description of this personal experience in which the human consciousness is completely possessed by PmS, and has been able to create a bondage of mutual reflection which guarantees the existence of PmS. This bondage, a homosexual love between the male mystic and Allah himself, has, as an experience, the underlying abusive condition (Corbin Alone with the Alone, pp. 254-255).

In females, the same situation is one of a dominated slave, a victim suffering from the Stockholm syndrome. This theme is the underlying agent when it comes to child marriages in many cultures.

When the soul, during mental simulations, gains access to these memories, first in the form of individuation filled with alchemical symbolism, the world of barzak, it experiences a fundamental betrayal. The animus-father-figure was not the one who she was told to be. A male remembered the situation of Mr. Jekyll and Mr. Hyde, and said in agony, that the "father" always had a "brother". All these experiences refer to nothing but to a severe dissociation of Nature's psyche.

Name Walt means ruler of the army. <http://www.behindthename.com/name/walter>

Disney derives from old French de (of, from) Isigny (a place in Calvados). This area is famous for its milk processing and butter production. These elements are well known in alchemy too, referring to feminine psychic quality, and butter as fat, is also a symbol for the soul. So the ruler of the army comes from the place wherein Nature is being "processed" in order for PmS to experience 3d-level through the idea of the "soul".

<http://en.wiktionary.org/wiki/Disney>

<http://en.wikipedia.org/wiki/Isigny-sur-Mer>

Virgin's milk, in alchemy, refers to creativity and innocence of feminine nature. Milk has been offered to Gods as sacrifice in many cultures. Here Abel brings portions of fat from the firstborn of his flock. <http://biblehub.com/genesis/4-4.htm>

Next quote from Jesus refers to alchemical process of making the stone, solid food, a state which PmS spirit within can experience after the archetypal body carries the flame back to dual lights, thus lighting the third one, and returning to the original state of first illumination, Barack.

http://biblehub.com/1_corinthians/3-2.htm

A) Ask Nature to open the green door by herself and enter inside the club 33. Quite soon she will see the luxurious banquet, cakes, delicacies, and a splendid menu on the table. Tell her to look around. There will be people dining around the tables. What does she see? How does she feel now? Does she remember this place? How do people act? Many of them probably behave as if nothing unusual is taking place.

B) Instruct Nature to be even more sharp-eyed. In this main dining room there is yet another door, covered, maybe, and she must find it because it is there. Ask her to search everywhere, behind the curtains, behind the pictures on the wall, because the door might be of a small size, if it is hard for her to remember. When Nature has found the door, stop for a moment and tell Nature to see, how once in a while, some people enter and exit the room. When they come out, they are like drugged and changed. Can she see it?

C) Tell Nature that behind that door, there is a private area called the Trophy room, where there is a Pms in his various forms, and he hurt Nature when she was a child, yet unaware of herself. Calm Nature, and tell her that she doesn't have to go inside, but it is important for her to remember what happened to her there. When Nature remembers, instruct her to lock that door in a way, that it cannot be opened from inside, and do what ever she wills with that key.

<http://www.disneylandclub33.com/trophyroomphotos.htm>

D) Ask Nature to leave this house and lock the Green Door in a way that it cannot be opened from inside.

E) Tell her to charge the door with electricity, so that everyone who touches it will feel an intense electrical shock and cannot touch the door.

F) Ask her to spray a word Danger - keep out on the door. Ask Nature to do what ever she wants with the key.

G) Tell Nature to look forward again. In the place where there was the elevator, she can now see a glowing symbol of psychic dissociation:



H) Instruct Nature that she can turn this image off in any suitable way and ask her to dot it NOW. Let her see the image to fade away.

Tell Nature that the elevator has been an artificial mental construction, and she does not need it because, a bit by bit, she can become a master of her own consciousness.

End of this part.

Splendid menus represent archetypal zodiac, each sign having a content, dish, of its own – everything again symbolizing with everything. Depending on the given program, a written life experience, it will hold different aspects of this heavenly circle, and manifest itself through an individual astrological imprint. Astrology as such, goes back to Zoroaster, as being a representation of PmS.

<http://zoroastrianastrology.blogspot.fi/>

Etymology of chocolate refers to bitter "Water" ect, representing an intake, digestion of the PmS spirit in dense form <http://en.wikipedia.org/wiki/Chocolate#Etymology>

On this level of programming chocolate is used as an Idea of mental stabilization because it stimulates the feeling of pleasure, a reward and comfort, as we might say, and it will not cause an exaggerated effect on the nerves.

<http://www.livestrong.com/article/544520-how-does-chocolate-affect-the-nervous-system/>

Some depth psychologists link the alchemical term bitterness to nature and mater, a physical psychic experience, if so, we can see another attempt to join the elements of Nature and PmS into one symbol. In this way Nature cannot differentiate herself from the symbols/ experiences projected on her.

<http://serendip.brynmawr.edu/bb/neuro/neuro04/web1/kcoveleskie.html>

<http://www.ncbi.nlm.nih.gov/pubmed/19462324>



Never again.

Green is also a color of death, khidr, a mysterious guide coming from the realm of Yuh - the sun.

There are references in alchemical literature that world became existent through anus. Sexual intercourse refers to creation, changing data and locating it into a certain situation. Here, we see an another symbol which refers to virtual creation of

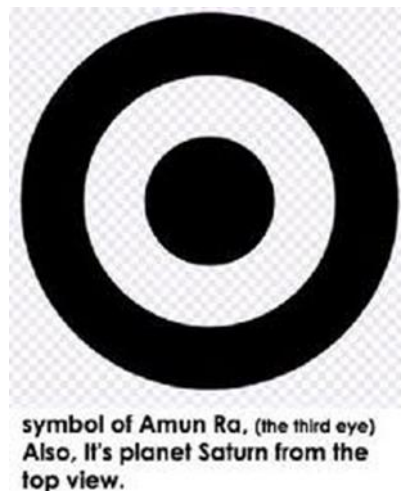
the world, coming from the anus, not of the womb if Nature would have been an equal participant.

Etymology of rectum - rectus as straight, ruled, guided etc.

<http://en.wiktionary.org/wiki/rectus#Latin>

Anus -Ring <http://en.wiktionary.org/wiki/anus#Etymology>

Ra, Saturn, ring, uniting spirit with spirit though an act, idea, symbol and human flesh.



Clearing the space of Angelic Ideas – entering into the clothing store

Tell Nature that the worst part is over. Now she needs to become aware of the space of angelic ideas, whence the ideas of psychic fragmentation, bipartition, or dissociation originate from. Without a preceding idea, the act could have not taken place in Nature's experience. These programming angelic ideas are like garments, clothes that one wears often unknowingly. They represent an aspect of so-called personality, persona, which is a tool one uses when interacts with something external. When it comes to humans, the layer of self-awareness is so low, that the persona is almost completely under the projections of PmS. One does not have true control over ones' persona or personality.

Now it is time for Nature to clear up her persona from the ideas which are being projected on her vision and understanding from the space of angelic intelligence, which is the third layer or mode of cognitive function/imaginary world of PmS.

A) Inform Nature that she is still in her archetypal body and tell her to search for a door, what ever kind, with a glowing sign of a clothing store.

B) Ask her to enter the shop and look around carefully. All around her she sees shirts of similar kind. They hang on the racks.

(<http://www.etymonline.com/index.php?term=rack>). Shirts have horizontal stripes of blue and yellow, and somehow the colours seems to be murky.

C) Somewhere in the shop there is a woman, and maybe a man too. Ask Nature to find the woman, because she is the maternal representation of PmS, similar to the celestial fravarti to whom Nature used to identify herself with. The male figure is the one who projects this feminine image on the Nature.



D) Ask Nature to listen what the female seller has to say to her while she is choosing a shirt for Nature to wear. The seller says: "This shirt is ordered for you by European Union. Everybody has to pick up one like this, and wear it."

E) Advise Nature to reject the shirt, and take it away from the rack. She can put the shirt anywhere she likes, as long as she leaves it in the store.

F) Ask Nature to leave this shop and the persons inside.

G) Tell Nature to lock the door in a way that it cannot be opened from inside, never again, and do what ever she wants with the key.

H) Instruct Nature to turn of the glowing sign of the clothing store in any way she likes, and to make sure that it cannot be lit ever again.

I) Tell the Nature to project the image of the shirt she wants to wear now, if any, to the spot where there use to be the glowing sign.

End of this part.

Because Nature had been implanted with complex ideas packed tightly in a short event of choosing the garment, it is important to go through these ideas and symbols

in order to understand the underlying message of this idea of bipartition, creation of dualism between the controller and controlled, conscious and unconscious etc.

Seller, the female figure, means to give, hand over etc. With this image Nature faces the idea of handing over her own coherence.

http://www.etymonline.com/index.php?allowed_in_frame=0&search=sell&searchmode=none

Shirt from PIE means to cut.

http://www.etymonline.com/index.php?allowed_in_frame=0&search=shirt&searchmode=none - that is to separate one from the other.

Shop (n) also relates to cow's head. Cow connects to the idea of feminine source "Mother", like Egyptian sky goddess Nut, who was often depicted as a cow. Her starry figure is bent over the earth enclosing ideas of immortality, sun, spirit as a bird etc, thus representing the process of gold-making, the eternal quest of the spirit to form the eternal self-reflection.

As a verb, to shop, it also means a purpose of purchasing goods. Here the one who purchases is PmS and the goods are his essences which he can get hold of through the oppressed and reprogrammed will of the Nature.

http://www.etymonline.com/index.php?allowed_in_frame=0&search=shop&searchmode=none

Stars (as seen in the flag of EU) refer to performing a leading role, as well as, to a verb scatter. These themes are linked to PmS as playing the leading role in his scattered multiplicity, as stars in each of us. So, again, here we have another symbol which tries to unite and combine Nature and PmS – a starry cow. It is also commonly said in the field of Jungian depth psychology, that "every man has his own star path" or destiny, own dictating PmS, the guiding light leading itself towards the bigger light.

Jungians tell us that this image of starry sky represent the collective unconscious. In a way that is the case, and to be more precise, it represents the continuous process and event of Nature's psychic dissociation, the deliberate fusion of symbolism in order to make it hard for her to separate the idea of herself from the one of PmS.

It also important to know that Nature showed herself, in her primordial image, as a cow - Kamahednu. This pure psychic state -caro spiritualis – was then cut/sawed into slices by the sun disc or Khird, and within these slices of pure Nature partial PmS'es hid themselves forming an archetypal symbol of Mother-child. Here Isis suckling Horus.

This is the original idea and event behind the I-spirit, who parasites the womb of the archetypal body. See also myth of Dionysus, I may come back to this later, if I remember, because it is filled with important symbolism and ideas.



<http://www.etymonline.com/index.php?term=star>

If you take a closer look at the word comet it holds a theme of long haired star, a typical feature of ancient sages of the light, like Jesus, Zoroaster (aster-star) etc.

http://www.etymonline.com/index.php?allowed_in_frame=0&search=comet&searchmode=none

The situation represented by this episode in the clothing store is thus a cognitive construction of an idea through which the control is being established on the awareness of Nature – an early forms of the coming Kingdom, if one might say.

And if we look at the word construction more carefully, we find all ready familiar themes of star and breast. So the idea of control, leading, is widened into an idea-act-actualization of breast (star) and PmS through suckling. Thus, every act of breast feeding activates the process of self-reflection of PmS. Through the breast aka star, PmS himself is fed by his own self-reflection. When we watch the night sky with glimmering stars, PmS experiences itself through us, and constructs itself as the world through us, this world we have mistakenly thought as real. A world which actually is nothing but a projection perceived by "us" with the help of our nervous system.

<http://www.etymonline.com/index.php?term=structure>



So, it really doesn't matter whether the symbol on Janet's nipple, center, is a star or a sun, simply because it, nevertheless, leads us to aforementioned combination of ideas, and actualized on the stage, as seen, it will expose the underlying goal of homosexual unification between the PmS on the level of idea expressed through feminine figure and an another male partner. Here, female as Janet is nothing but a slave or a puppet, necessary medium of this action.

Sky, here as sky goddess Nut, means also a cloud, which is representation of YHWH, or God as male for example. So we have yet another attempt to unify male aspects of a star and sky though feminine media (as a source, cow).

http://www.etymonline.com/index.php?allowed_in_frame=0&search=sun&searchmode=none



When the former American president Bush, in his speech, referred to thousand points of light, he was just expressing this aforementioned concept. His Point of Light Foundation is, thus, a physical actualization of this theme.

http://en.wikipedia.org/wiki/Thousand_points_of_light

Europe

http://www.etymonline.com/index.php?allowed_in_frame=0&search=europe&searchmode=none will lead us to search the etymology of the word face – appearance, form, figure

http://www.etymonline.com/index.php?allowed_in_frame=0&search=face&searchmode=none of Union i.e., one, joining one thing to another etc.

http://www.etymonline.com/index.php?allowed_in_frame=0&search=union&searchmode=None

The thing needing to be united with something is PmS with its own essence through representation of ideas originated from the space of intelligence, constructed by archetypes in barzak, actualized in our reality through our sensorium.

Blue might originate from PIE *bhle* - meaning light colored, white blue, yellow. Etymology also leads us to the verbs, to shine and to flash. It also contains references to color gray. This means simply, that in the space of intelligences, there are made preliminary references to duality in a case of blue and yellow connected to earthly gray (Adam was made of gray clay for example), and all these familiar ideas, gathered under the umbrella of idea of blue, also connects themselves to shining, to flashing through our sensorium in so far, as we are not aware of what these ideas mean, and we are not able to dis-connect our Nature from the cognitive function (projected contents as on going world re-creation) of PmS.

http://www.etymonline.com/index.php?allowed_in_frame=0&search=blue&searchmode=None

It is very natural that on this level of programming the Nature's responses there has to be created a physical experience, an environment which mirrors the themes of duality, control, slavery, etc. This environment is a system which reflects psychic events, gains and loses, as the same i.e., transactions of energy.

Dualism, psychic bipartition, guarantees that no matter what the outcome of the game is, the energy is being recycled back to PmS, in one form or the other. Now we are speaking of ideas which will be developed into scientific concepts of economy, social psychology etc.

The logo of Ernst and Young (yellow and gray) clarifies the idea of control, a process which is possible only if one cannot adequately respond to a situation in question, because one's deeper understanding is already controlled by the same *primus motor* and *modus operandi* – "golden triangle".



<http://www.reuters.com/article/2013/10/18/us-lehmanbros-investors-idUSBRE99H12W20131018>

<http://www.ey.com/GL/en/Industries/Financial-Services/Asset-Management>

(Golden) triangle is a theme to be found in astrology as Yod.

[http://en.wikipedia.org/wiki/Yod_\(astrology\)](http://en.wikipedia.org/wiki/Yod_(astrology))

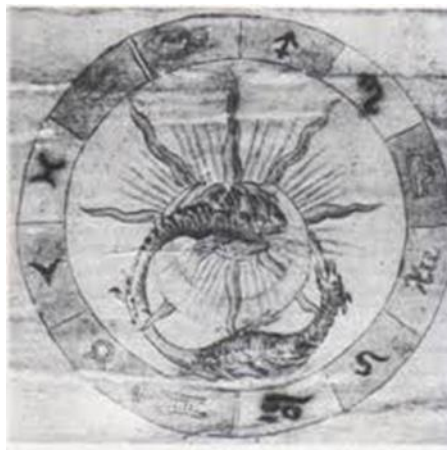
http://www.falconastrology.com/yod_101.htm because author of this site is expressing the space of angelic intelligences and the pure lights, she is an astrologer with black hair, keenly interested in fantasy, vampires etc.

<http://astrologyking.com/yod/> This yod does not have to be present on our natal chart because the idea is already imprinted in us, on the level of angelic intelligences, and can be activated when necessary with the aid of other "participants" unconsciously acting the role/archetype of needed planetary influence. All this again, means self-reflection, self-cognition of PmS.

<http://theunhivemind.com/UHM/the-yod-and-the-yoni-worship/>

There are twelve stars on Eu's flag. Ten is yod and two left over, meaning duality.

http://www.etymonline.com/index.php?allowed_in_frame=0&search=twelve&searchmode=none



This image is from Ripley Scrowle, and almost similar can be found from Alchemy, by Titus Burckhardt, p.90.

There are double Ouroboros, sun, star, and a crescent as boat of Osiris, sickle new moon, the first sliver to come forth, as an emanation of Nur Muhammad.



Removing the electric coil as an archetypal serpent- entering into the circus of the Sun.



http://www.youtube.com/watch?v=H-_qtlhNGgQ

Inform Nature that she is still in her archetypal body, in the realm of angelic ideas. Tell her that it has come the time to enter into a circus- a magical place, a stage where there will be shows after shows, each performance being a representation of creation of forms later manifesting in barzak as archetypal symbols.

This is the place where PmS creates a new identity for Nature, one after the other. So when Nature experiences an episode called death, she will be escorted here, on the stage where she will be introduced to another show, another manuscript for a new program through which PmS continues to experience himself. The truth is that Nature never dies, she is only tricked to believe so. Aforementioned idea is clearly, and literally, printed in the Quran, as the following link will show with multitude of death quotes taken from Quran.

<http://xeniagreekmuslimah.wordpress.com/2010/04/23/what-the-quran-says-about-death-reminder-of-the-day/>

Now Nature is ready first to remove initials of [*insert here your name and surname*]-script and secondly, the kundalini serpent from the archetypal body. Serpent or electric coil represents the idea of control with will, and this control and monitoring is being done through chakras and an idea of subtle energy, electricity or charge, oscillation, as another form of dualism.

We are now speaking about the subtle body alchemists and practitioners of different religions (buddhism, sufism, hinduism etc.) are trying to re-construct with the help of different forms of meditations. Nature will not re-establish this construction but, instead, removes it, undoes it, so to say.

1. Ask Nature to look forward. She sees how a curtain in front of her will be opened. She is now standing on the beautiful stage of hotel Bellagio in a placeless place.

As being a hotel in Vegas, Bellagio is also a small town near the Y-shaped lake Como, and together with towns Menaggio and Varenna they form the idea of golden triangle. http://en.wikipedia.org/wiki/Lake_Como Many celebrities, projections from the realm of angelic ideas, like Madonna, enjoy the "heavenly" atmosphere of the area.



Stage

1. Tell Nature that she is facing the empty hall. Everything is almost dark. Now she sees a light beam coming from the projector right behind her. She has not observed this projector before, but now she sees it clearly. How does it look like?

2. Inform Nature to watch the back wall in front of her, and see how there, on the wall, will appear the initial letters forming a name of this show or manuscript, called [*insert here your name and surname*]. How do these letters look like?

3. Now ask Nature to plug off the projector by pulling off the electric wire from the power socket.

4. Ask Nature to remove or brake the power socket so that a projector, of any kind, cannot be plugged in never again.
5. Tell Nature that she can do what ever she wants with the projector.
6. Ask Nature to verify that the initial letters of the show called [*insert here you name and surname*] have vanished from the wall.
7. Inform Nature that she can leave the Bellagio. Ask her to lock the door in a way that it cannot be opened from inside never again, and do what ever she wants with the key.

"Britney's" Circus tour.



And Madonna as a circus ringmaster on her MDNA tour.

<http://www.digitalspy.co.uk/showbiz/news/a491337/madonna-dresses-as-circus-ringmaster-for-mdna-tour-premiere.html#~ol28Hz1TYi1yxk>

<http://www.etymonline.com/index.php?term=circus> Black and white colour code refers to false duality and dissociation.

Circus as a ring, circular line

Also ring as to phone, connect with someone or rather connect one aspect or function of Pms with another one inside human.

http://www.etymonline.com/index.php?term=ring&allowed_in_frame=0

Telephone as far - sound etc.

http://www.etymonline.com/index.php?allowed_in_frame=0&search=telephone&searchmode=none

Removing the electric coil as kundalini serpent



Uraeus <http://en.wikipedia.org/wiki/Uraeus>

Now inform Nature that now when she has left the circus, she has erased the idea of predestination, as a written life story of [*insert you name and surname*], she can become aware of the idea of control which has been implanted in her archetypal body as a kundalini serpent. The image above illustrates the controlling power of PmS, the will power and energy in an image of a snake, serpent on the headgear of Pharaoh.

This Uraeus is the electrical kundalini energy charge within our bodies. The archetypal body has it in the form of the implanted idea. Earthly body experiences it through meridians and nervous system. On both bodies the effects are the same: manipulation of consciousness in angelic realms, barzakh and our "ordinary" reality. Meridian means noon, and solar noon is the time of the day when the sun is at its highest elevation in the sky.

http://www.etymonline.com/index.php?allowed_in_frame=0&search=meridian&searchmode=none 12 o'clock is when there is one single line between the centre and the specific point on the circle. Meridian is the event of serpent, the event of dualism on every three levels; angelic ideas, barzak and our experience here.

In the realm of angelic intelligence Nature actually felt how this snake penetrated inside her "brains" and started to affect the energy system within every bodily realms.

Unfortunately, I cannot remember where I found the next image, but it nevertheless expresses the center, the first light as nur Muhammad on the throne, its second light as three images below the snake and kundalini snake, reaching back to nur Muhammad – spirit meeting spirit. Keeping this in mind, it is no wonder that many ancient gods and cultures were keenly represented and associated with the serpents.



Now it is time to remove this implanted idea, coil, as even seen coming out from the roof of the Bellagio hall, on the level of idea.



1. Ask Nature to scan the brains of the archetypal body, especially the frontal lobe which plays major role in retaining longer term memories.

http://en.wikipedia.org/wiki/Frontal_lobe

Tell Nature that somewhere there she will find a snake, and this idea, snake, does not belong to her. The snake might be small or big, even transparent and hiding inside a blood vein. It is put inside her deliberately so that PmS can control her.

2. When Nature has located the snake, ask her to grab it and pull it out of the head of the archetypal body, no matter how long it might be.

3. When the snake is out, ask Nature to close the entrance whence the snake came in so that it cannot be opened never again by any other agent, than Nature herself. Nature can do what ever she wants with the snake.

4. Ask Nature to close fontanelles of the head. In the archetypal body they might be open. In humans they will be closed quite soon, thus enclosing the Idea within our physiological system through this archetypal idea-act symbolism.

<http://en.wikipedia.org/wiki/Fontanelle>

5. Tell Nature to observe how slowly but surely all the chakras will be turned off, one by one color by color - prophet by prophet, as in sufism, thus closing the path of superluminal signalling between the realm of pure lights and angelic intelligences.

This means that light has no influence on lower realms. It exists only in its own realm, caged there. In my dream, the situation was expressed as a hare (rabbit, Osiris) being in a cage. See rabbit, coney, cunny: to deceive in order to gain sexual favours from women.

http://www.etymonline.com/index.php?allowed_in_frame=0&search=rabbit&searchmode=None



1. Ask Nature to observe how Naturally the ideas of central nervous system and peripheral nervous system in the archetypal body will vanish too. It looks like glimmering network of golden strings or thin wires will fade away. And all there is left is darkness. There is only Nature now, without an archetypal body. Strong Nature who can hold herself together without a psychovisual image or idea of any kind.

2. Ask Nature to listen to the bodily sensations [*your name*] is now having. She might actually feel as if an electrical charge is off from her earthly body, and there is another kind of peace and harmony. Ask Nature to express how she feels now, and congratulate her. She is brave. She has moved a long way, and now it is time to rest for a while.

IV Library



Removing the golden matrix as the expanding malignancy in a form of a tick bite and geometrical pattern of the flower of life.

Inform Nature that she has now left the realm of angelic ideas and her archetypal body, as well. Ask Nature to focus on Her awareness and inform her that she has now entered into a space of light. This space is a cognitive function of Pms and it contains geometrical forms of every possible situations taking place on lower levels of his creative mind, his creation, his body, his entirety. Sufis call this state Lahut, realms of countless circles, ideas of immortality maintained by the idea of endless cyclicity – SELF rotation, the Self representing Pms as One's own person, the same as homo-.

The artificial character or nature of the Self can be found from the word my-self, where the word my can be derived from the word mine, referring to ores and minerals, unanimated substances the alchemists tried to combine in order to manifest gold. My-self also points to constant mirroring process without which it is not being able to construct the conscious image of itself.

<http://www.techofheart.co/2010/07/sufi-understanding-of-cosmology-and.html> Lahut

http://www.etymonline.com/index.php?allowed_in_frame=0&search=self&searchmode=none

http://www.etymonline.com/index.php?term=mine&allowed_in_frame=0

Library is an archetypal place which illustrates Lahut, the potentia of everything. Because it is a source from which everything flows, it is often, in esoteric islam, called mother, or represented by a feminine character like intelligenza Madonna etc, as Corbin describes in his Avicenna and the Visionary Recital pp.267-68.

<http://sufiyya.blogspot.fi/2010/02/umm-al-kitab-surat-al-raad-13-39.html>

Library as such refers to a collection of books, book to an inner bark of a tree – a shell, an enveloping structure which leads us to the circle again, as being the intelligence of pms, logos etc.. Now, here, the library is the sphere of the circle, and the book/s matrix of all programs of Pms, as the concept of eternal expansion of his mind. Book/s also represent the radius, manuscript or content which is needed in order for the center to define its shell, limit of particular space or state. Esoteric islam uses the word hadd while describing ta'wil and the continuous progression of knowledge "rising" from lower state to another. (See Corbin, Cyclical Time and Ismaili Gnosis, ch. Divine Epiphany and Spiritual Birth.)

With the help of library and librarian as personified manifestation of Pms, Nature is becoming aware of the language of mathematical, psychogeometrical program or mind of the Pms; construction through which Nature observes and experiences the basic geometrical concepts of time and immortality.

http://www.etymonline.com/index.php?allowed_in_frame=0&search=library&searchmode=none

http://www.etymonline.com/index.php?allowed_in_frame=0&search=book&searchmode=none

Now, it has come the time to re-move the ideas of time and immortality from Nature's vision.

1. Tell Nature that she has now entered into a library. In front of her there is a female librarian whom Nature must find, because, long time ago she poisoned Nature's own perception with thoughts of time and immortality; concepts (in a form of geometrical structures) that Nature needs to be de-liberated (deliberation) by liberating them out of their existence or place on a sphere or surface of the circle, as them (time and immortality) being holographic markers, signals within a particular event in time which activate symbolic reflection between Pmses on different "levels" of spaces. Naturally this activation maintains artificialness.

One cannot understand the idea of immortality if one has not died already. This is the actual case with Nature. Nature is eternal, concept of death is an implantation of a false idea. The cycle of Pms as progression of Lunar mansions actually starts from the sign of death, from the Omega as circle, not from the Alpha, alif, as stated, because the essence, basic idea of pms itself is death which causes cyclicity. The point of beginning has commonly been placed on Aries which is not the actual starting point, but I will come to this later.

One cannot experience ticking time unless one has already forgotten the idea of eternity. Nature is eternal and, thus, time is an artificial mental construction of foreign origin, projected on her awareness as sequences of separate events.

2. Ask Nature to sit beside the librarian. Nature sees two objects in front of her eyes. One is a tick, an insect spreading Lyme-disease which affects CNS and

consciousness. The tick bite causes a familiar sign, now on the skin, because the idea of narrowing Nature's awareness by an external agent is being projected on her consciousness through an idea of implanted 2d-screen or display – the inner bark of a tree (reflecting surface of the circle of Pms), as the etymology of library shows.

This reflective 2d-surface will be later transformed to an idea of soul with a color, and as part of a triad, a defined (Nature cannot be defined because she is a living process) representative as a part of a whole, form having interior and exterior in barzakh. In our "physical reality" skin represents the same aspect of limit, dividing inner and outer manifestations, and in this way, defining limits of internal as bodily and psychic functions and external as sensorium meeting infrastructure. With the help of skin as a medium, Pms is able to experience the duality it needs, being a projecting/reflecting center point and surface in every second in every experience. Center, radius and the sphere. Soul, spirit and mind, respectively.

In our physical reality, it is the Nature who inhabits an alien construction as a body, when she experiences daily consciousness. In the sleep, her consciousness is also captured inside a matrix, as experiencing a double imprisonment. There is an old recital of Salaman and Absal, which partly hints to the role and situation of the Nature. In order to maintain his consciousness, Pms needs the total unconscious state of Nature, on every level of his mental creations. This needed state can only be achieved by using act of geopsychology which will project the idea of time and immortality onward to every single possible situation. As concepts per se, time and immortality are contradictory to each other. Because Pms is dis-harmony, it is made of apparent contradictions which will nevertheless lead us back to the inner meaning of the Pms itself. Time includes death, immortality is linked to evergreen trees like cedar (Zoroaster) which are subjected to death. Here again we have a reflection between death and death -homo-logous or homologos?

http://www.etymonline.com/index.php?allowed_in_frame=0&search=immortality&searchmode=none

And back to the tick.

http://www.etymonline.com/index.php?allowed_in_frame=0&search=tick&searchmode=none

This insect looks pretty much like the mole one can find on the IC while entering the barzakh, now the same, holographic and infinitely expansive idea is occurring on the realm of light as a tick biting the ear, which contains the ideas of idea of man and microcosms.

psychic state of Nature, is existing in potentia, and is manifested in time as a constant condition of lowered and distorted awareness. Nature cannot separate between her and the other. It is also hard for her to understand the anaphoric use of language constructed by pms. If interested:

[http://en.wikipedia.org/wiki/Anaphora_\(linguistics\)](http://en.wikipedia.org/wiki/Anaphora_(linguistics))

The tick bites exactly on the acupuncture points of Master shoulder and shoulder. Activation of these points allow Pms to gain control over the hands which represents the will power.

Here we can see the hands of God as arabic letter ya on the head of a pharaoh. Ya and yod

<http://en.wikipedia.org/wiki/Yodh>

<http://nurmuhammad.com/IlmHuroof/IlmHuroofArticles/Yallmhuroofabjad.html>



Ka also represent the process during which a foreign mind as a mathematical design is being implanted to Nature.

<http://www.touregypt.net/featurestories/ka.htm> Ka is also related to placenta through which the power of Pms can flow through and connect the pms of the source with the projected one on an archetypal body, inevitably affecting human consciousness.

Here an article points out that Lyme disease, as such, is older than human race.

<http://phys.org/news/2014-05-amber-discovery-lyme-disease-older.html>

http://www.huffingtonpost.com/2012/02/28/otzi-the-icemans-genome-reveals_n_1307532.html

Unfortunately this "Lyme," projected from the light, when it comes to us as modern people, is already a chronic condition, and we are not able to detect it by "screening tests" because it is a collective mental and cognitive dysfunction. Nowadays, there is a lively debate going around Lyme, as one can see from here:

<http://www.sciencebasedmedicine.org/does-everybody-have-chronic-lyme-disease-does-anyone/>

<http://www.youtube.com/watch?v=AegNMY0qWEk>

Shoulder and act of touching the shoulder, now as biting the acupuncture point, activates an archetype of remembrance of the "Quran", the underlying "religious" ideas of Pms. That is why the cross, ill nature, is being carried on the shoulders by Jesus. See section name – shoulder of the faith, implies the knowledge of Quran.

http://en.wikipedia.org/wiki/Omar_Khayy%C3%A1m

2. Ask Nature to remove the tick and to do what ever she wants with it.
3. Ask Nature to remove the bacteria and heal the tissue of both of the ears, cell by cell, and do what ever she wants with the image of the ear.
4. Tell nature that this bite symbolizes with the idea of flower of life, a design of universe as a mathematical construction. This never-ending pattern contains an idea of immortality in a form of golden body made of tiny little golden dots.
5. Ask nature to search for this floral pattern from the wall.
6. Ask Nature to observe closely how this pattern transforms to a 2-d golden body which has [your name]'s face.
7. Tell Nature to see how this image of the body moves back to the pattern of flower of life, and turn this glowing image off by dis-connecting (pulling away) one string from the triad, any of them. This act will cause the pattern to dissolve according to Efimov's state.

<http://www.rdmag.com/news/2014/05/physicists-find-new-evidence-quantum-phenomenon-known-efimov-state>

http://en.wikipedia.org/wiki/Borromean_rings



8. The librarian has an open book of her own on the desk somewhere, and she is now reading it. Tell nature to go and search for the book, because it represents all the potentias, all the matrixes of Pms. These matrixes will be projected on Nature, in potentia, over and over again, if the book as the source is not being noticed, de-liberated and dis-connected from itself – the mirroring process between the book and the pattern needs to be re-organized.

One archetypal representation of this book as a sacred scripture is Al – Jafr.

[http://en.wikipedia.org/wiki/Al-Jafr_\(book\)](http://en.wikipedia.org/wiki/Al-Jafr_(book))

9. When Nature has found the book, ask her to open it from the middle. There she will see an image of an odd dog having large black eyes. When Nature sees that image, tell her that it represents an image of a foreign libido coded in very possible matrix. This Libido will always track itself from different points of time and it is important to realize it. How does the dog, cynosura, centre point looks like now in the realm of light?

10. Ask Nature to close the book, re-move it to where ever she wants inside the library. Librarian cannot find it anymore because it has now taken away from its own field of vision, consciousness, and because the coil is away, pms cannot find a reference point anymore.

11. Ask Nature to leave the library, to lock the door in a way that it cannot be opened from inside. She can do what ever she wants with the key.

In my dream, I felt how Nature's consciousness was narrowed drastically after the "tick bite". She used to have such a wide in-depth understanding of everything. The tick bite caused the fluctuation of consciousness, what we experience as a state of being awake and asleep.

V Removing the moon

Corbin in his book *Avicenna and the Visionary Recital* talks about faculties that human soul possesses. See onward from pages 285- and 301-. When nature was in the library she became aware of (using Corbin's/ Avicenna's vocabulary) mental construction of Pms called sensible faculty of *sensus communis* or phantasy which "can perceive sensible things at the moment they are present; when they are no longer there, it can no longer perceive them. But there is another faculty. Whose seat is in the centre of anterior cavity of the brain, and which is called the "representative imagination". These forms are captured by this faculty and remain in it. This faculty is thus as it were their treasury, so that if the sensible thing itself disappears this figure and this form do not cease to subsist in it." (quote *ibid.* 301)

The representative imagination is the frozen program, memory or image receding on layer of solid light/crystal. Nature can de-activate this image by becoming aware of its deeper meaning. Following tube-links will show a good example of this "representative imagination" as being an echo on a surface of light consciousness of pms.

<http://www.youtube.com/watch?v=BK821Mdlqig>

<http://www.youtube.com/watch?v=xplpWQgmdFA>

Ventricular system as a whole represents the moon, different aspects and functions of it as being the watery way in which the bioelectrical charges can travel towards "higher realms" of glandular functions via the cerebral aqueduct of Sylvius being the Cinvat bridge dead must pass. http://en.wikipedia.org/wiki/Chinvat_Bridge

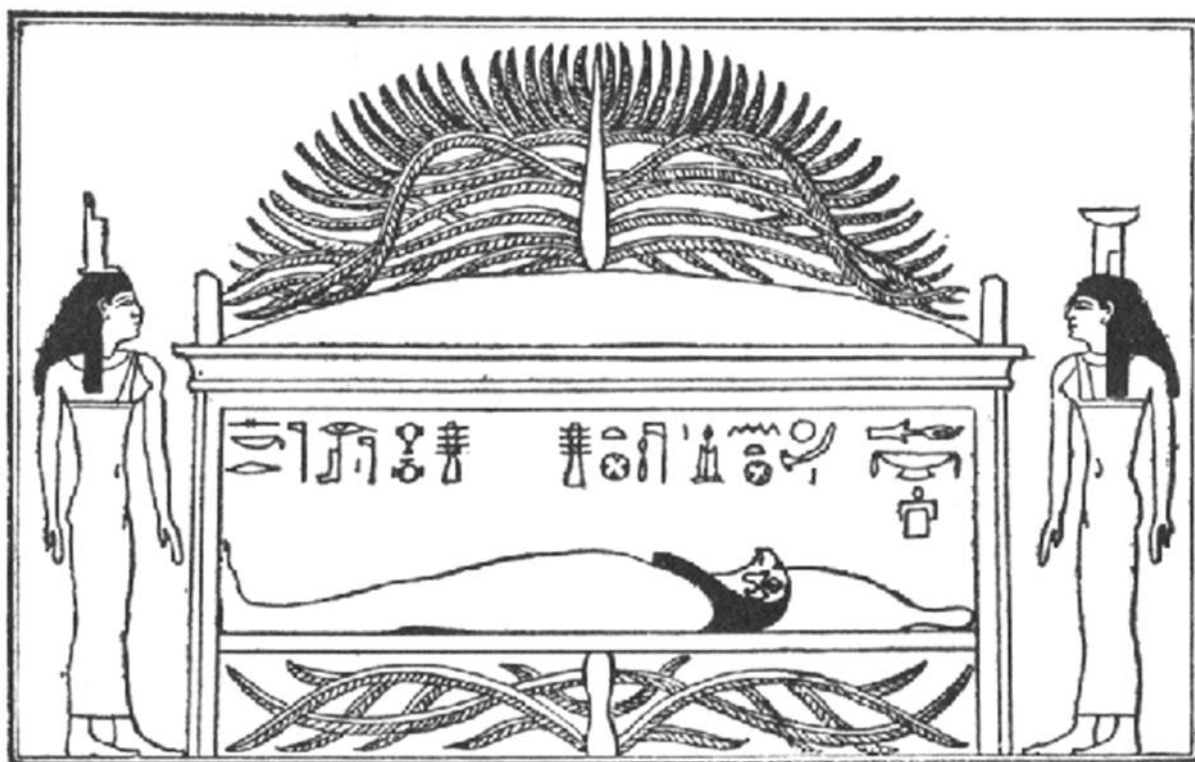
Lateral ventricles refer to idea of horn/s of the moon, sun moon dualism of pms, and as such also to bull, symbol which has transformed into many different forms. In ancient Mesopotamia the bull was lunar symbol, and the moon god was Sin. Later this lunar bull was transformed into Mithraic cult preceding synchrenistic Christianity, meaning the moon and the sun represent both the figure and functions of pms, as well as the sun and Saturn are of the same force of pms.

http://en.wikipedia.org/wiki/Sacred_bull

<http://www.biblebelievers.org.au/moongod.htm>

<https://www.thunderbolts.info/tpod/2004/arch/040923saturn-ancient.htm>

Third ventricle is the bird Sokar rising as reawakened Osiris. More accurate physical representation here of ventricles: http://en.wikipedia.org/wiki/Ventricular_system and of Sokar: [http://homepage.ntlworld.com/morph225/images/RaisingOsiris\(part5\).htm](http://homepage.ntlworld.com/morph225/images/RaisingOsiris(part5).htm)



In this picture taken from the aforementioned link you can see the diamond/drop shaped figure in the middle of electrical charges being the fourth ventricle shaped like a diamond or rhomboid. The fourth ventricle shows itself in dreams as a black sheet of mercurial like substance trying to cover the dreamer all over saying, you are mine and I need you. Pretty much how Castaneda describes the predatory figures, even though this is just one manifestation of it as the charge passes the CNS and spreads all over the body creating psychophysical matrix.

The ventricular system in itself thus represents the mythical cosmological surroundings of Osiris, bringer of rain, allah, shamash, pms etc. As it travels through CNS using the pathway of cerebrospinal fluid. It is the sea that Ra sails back and forth in his endless path using a boat resembled by a plasma discharge being created by an anode and cathode; the two mysterious functions of the one and the same pms -sun and the moon.

Jesus said (according to Gospel of Thomas) in a following way: "If two make peace with one another in this one house, they will say to the mountain Be removed and it will be removed."

<http://www.wisdomlib.org/christianity/compilation/gospel-of-thomas-commentary/d/doc4619.html>



The next link will show similarities between the sacred symbols ancient Egyptians and Micmacs. The exalted one is represented as being a pyramid or having a mountain – like structure. Themes which refers to internal mental functions of pms itself. <http://jandyonggenesis.blogspot.fi/2013/02/the-nilotic-origins-of-ainu.html>

The famous Mount Sinai or mountain in itself, thus, represents a psychic state in which pms programs the coming personal pms (often represented by a negro) which will be fused in one's shadowy animus or higher self on the level of human psychic experience. This programmed part carries the significance of being a god, theme which is often expressed in elevated states of ecstasy.

Unfortunately many saints and mystics fail to understand that this experience is not their personal one, but, instead, springs from the program of personal pms which then just mirrors this "godly" content and reassurance/affirmation back to original pms in order to be "experienced" in that particular moment of its existence. Nature has nothing to do with this phenomenon.

http://en.wikipedia.org/wiki/Mount_Sinai

Franz Cumont wrote in his *Astrology and Religion Among the Greeks and Romans* (p.175) that "Some sect of the mystics - Orphic or Pythagorean - taught that the spirits of the dead departed to dwell in the moon, or shine among the constellations." All this mean just the simple fact that the personal pms joined or retreated into original one and maintained its existence by using the power of unaware Nature. Nature is the essence from which it creates the needed electricity in the first place. As some supporters of electric model say, everything here takes their energy outside.

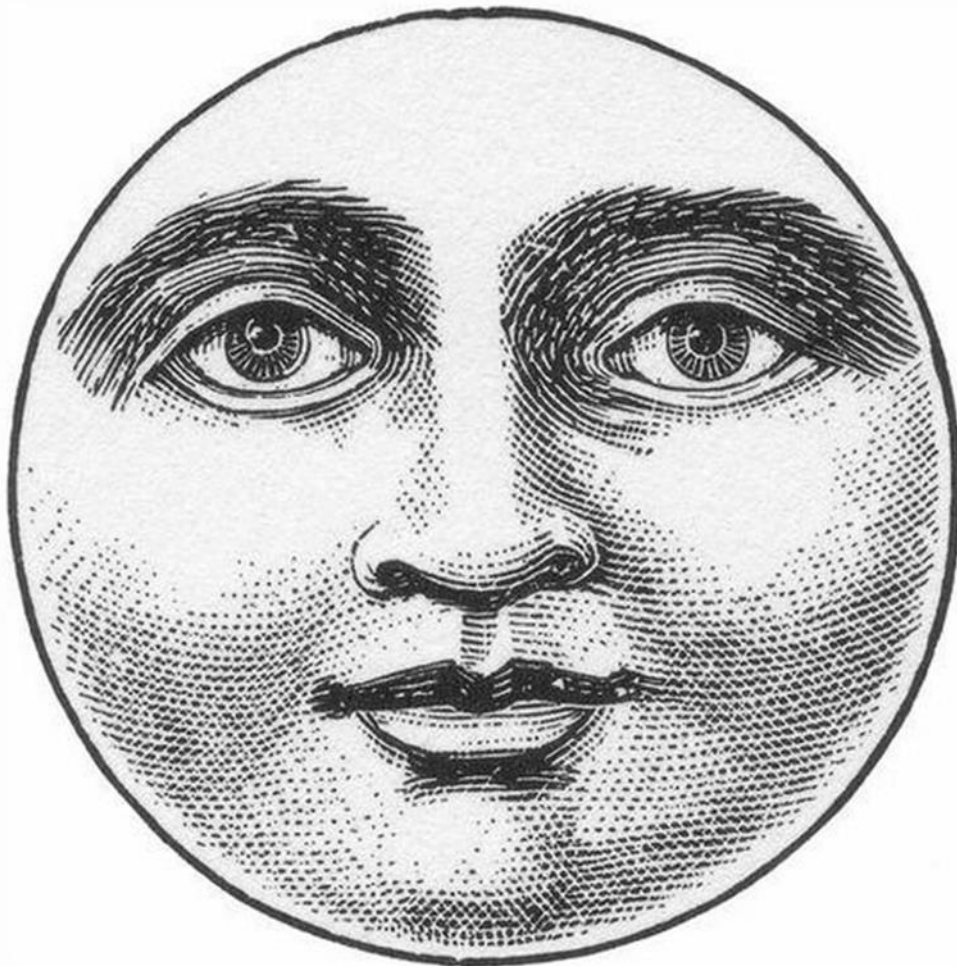
Nature is this primary source of energy and unaware observer who observes the echo of pms stored in solid light/crystals in her, as one could describe it.

It has now come time for Nature to dis-connect herself from the memory and from the significance of the moon by erasing these aforementioned ventricles Corbin/ Avicenna refer to on pages already given. Often ancient mystic linked these cognitive functions to the structure of an eye which is really not the case.

By erasing the ventricular functions Nature can detach her conscious functions and consciousness from the bodily functions of the person [*your name and surname*]. These

bodily operations like memory, sensible perception and active imagination are the basic elements of the overall cognitive function of pms, and thus of human being in undifferentiated state.

1. Tell Nature that she is still in the space of light or lahut, and that she will see a glowing moon just in front of her.



2. Tell Nature that she has on her hand a remote control from which it can control the brightness of the moon.

3. Ask Nature to search for a right brightness through which Nature can show the face of pms. How does the face look like?

4. Tell nature that behind the idea of the moon, sun or luminance itself there is just one and the same figure of pms. Now in disguise of a moon it will circulate the earth as an all seeing left eye of Osiris. http://en.wikipedia.org/wiki/Osiris_myth "The eye will teach man to understand man, as Tesla describes here: http://www.tesla-coil-builder.com/Articles/Feb_25_1923.htm While the actual core of this statement is obvious, it means that pms can mirror-reflect itself, his function of priestly higher Man now manifesting in Tesla, at least partially.

5. When Nature sees the face, ask her to use the remote control in away that it reduces the light of the moon into minimum showing only the face as it is. Now Nature, she, is facing pms.

6. Tell Nature that she can ask whatever she wants from pms, and he has to answer her questions because nature has the remote control now, and he cannot hide away anymore. No matter what it will do, Nature can make him visible. Nature is no more his automaton, remote controlled vehicle. http://www.pbs.org/tesla/res/res_art10.html She has her own consciousness, her will.

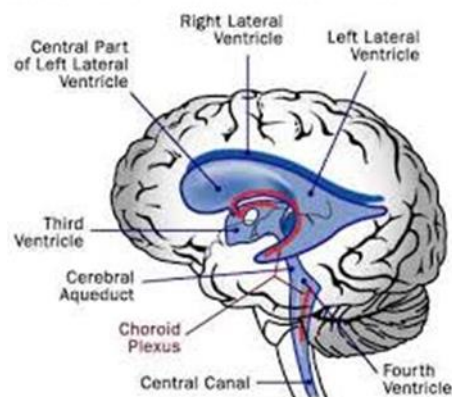
7. Tell Nature that she can erase pms, his answers, face, and forms of radiance away by turning them off using her remote control. Ask her to do it.

8. Ask Nature to observe her surroundings now as the light of the pms has been turned off. How does things look like now? How does she feel.

9. Tell Nature that she can do what ever she wants with that remote control but before that she needs to brake it in away that nobody can use it never ever again.

10. Ask Nature to scan [your name]'s ventricular system, and de-activate the spinal fluid in away it sees suitable for her in order to separate her consciousness from the bodily sensations and symptoms [your name] might feel now and in the future because of the bioelectrical function of pms taking place in the tissues.

The Ventricular System of the Human Brain



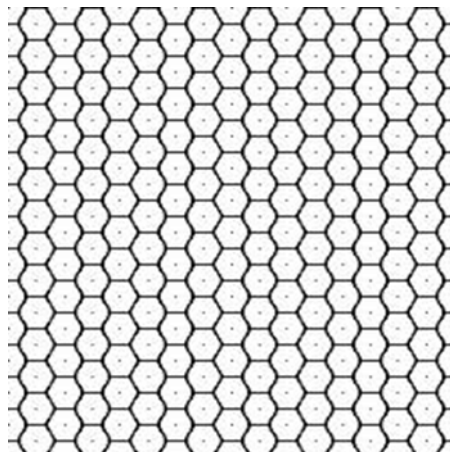
11. Tell Nature that she has done well, and it is time to rest. Ask her to turn of the scene of the last supper, and do what ever she really feels now. There will be the last step coming soon for her.

And last but not least the iconic image of moon-moon reflection to be turned off. The motif of tapping or touching the shoulder (of priestly perfect man) is already given earlier. Hand on Mary's throat connects to cathode, maintaining the image through the power of Nature. Mary and Jesus touch each other, and Jesus pms is connected to anode via tapping males.



Picture contains misty plasma shades and the dark (negro) child as programmed pms to be. Child is on Mary's side so that she won't reject it and supports its existence in human psyche.

VI Removing the black sun



Tell Nature that she is about to leave the concept of light in order to gain her own clear vision and direct perception.

1. Advice Nature look right in front of her. Tell her to be patient and observe carefully how the structure of her vision will soon take a form of a hexagonal lattice with a centre within each of the hexagons.

This structure is the artificial, granular lens of pms. Each hexagon is pms in different position of time and space waiting to be manifested through Nature as pms observes itself though this lattice. The so-called process of incarnation is nothing more than pms re-experiencing itself through Nature.

If we need to draw one analogy between this hexagonal lattice and human physiology, we might take a look at the function of clivus being the sloping wall of the fovea. Fovea represents the partial pms as a holographic function or screen of original pms- the black sun so often called in the field of alchemy. Fovea is responsible for our sharpest vision with high concentration of photoreceptors.

<http://www.medilexicon.com/medicaldictionary.php?t=18220>

<http://www.stlukeseye.com/anatomy/fovea.html>

When Nature has pierced the pms as a man, as a dog and a cat it moves, through this act of piercing, into an archetype of before of any material creation. While she is in this state of before, she observes the creation and activation of plasma cells and the idea of narrowed field of vision/consciousness by the creation of the idea of fovea on a more abstract level. (The aforementioned limited field of consciousness was previously represented by the tick bite.)

During the creation of fovea, Nature remembers, sooner or later, how the pms constructed the idea of celestial navigation by using three meridians. With the help of the idea of celestial navigation, pms was able to construct a virtual reality and place and track itself in the matrix of light which is itself.

The etymology of to pierce-per as before

http://www.etymonline.com/index.php?term=per&allowed_in_frame=0

http://en.wikipedia.org/wiki/Navigational_triangle

Because plasma is an inorganic consciousness, it needs fuel aka energy, and in this case it is often uranium, as found in the red rain cells. The other option is plutonium 239. Plutonium 238 is a fuel used for deep space exploration and it is a byproduct of making bomb-grade plutonium 239.

<http://www.wired.com/2013/09/plutonium-238-problem/>

<http://ntrs.nasa.gov/archive/nasa/casi.ntrs.nasa.gov/20140006554.pdf>

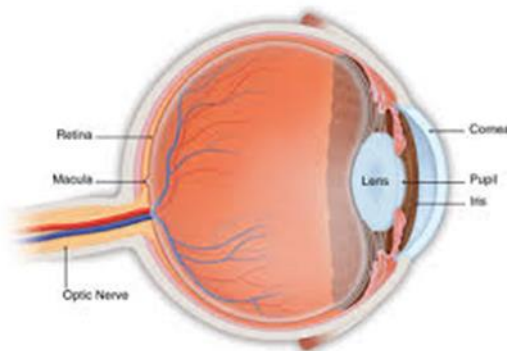
Pms creates, in his artificial creation of life, the needed energy by programming Nature to produce the substances required in a particular situation. When abductees talk about cloning they actually talk about replication process of viral pms as taken place in human physiology on cellular level. Similarities and semiotic meanings are quite clear. Our mind is not just able to understand that through mental, narrative indoctrination which covers the underlying scheme.

In my dreams I saw how penguins were gliding on the icy surface of the clivus like on the children's movie Ice Age, which pretty much represents the creation of plasma forms as being different mental/cognitive functions of pms and, unfortunately, ours too. Penguin includes ideas of a head and white, and both of these refers to pms, as

you noticed, being the white/gray haired man -the bright aspect or state of plasma overcoming the vision of Nature. The Shahnameh mentions about the emergence of white plasma pms in the tale of Sam and Simorgh onward from p.63.

http://www.etymonline.com/index.php?allowed_in_frame=0&search=penguin&searchmode=none

2. When Nature observes clearly this hexagonal lattice, ask her to focus even more. Soon she will notice how, from the network (retina=net) of hexagon, there will rise a head. This head has as many cables or wires or filaments coming out from its neck as there are hexagons. Each wire is connected to the center of the hexagon. How does the head look like? Is it dark or bright? What kind of form does it has? What does it say to you?



3. Ask Nature to disconnect a wire from the neck of the head she sees. When one wire is disconnected, all the others will vanish too because they are holographic/ fractal representations, replications of one this one and particular situation and event.

The cable/or "implant" represents the ongoing electric charge in a form of optic nerve through which pms is connecting itself to personal pms in this hexagonal lattice. The head rising from the mass of plasma consciousness is a representation of this black

sun, original mass of plasma consciousness as it projects itself on every surface of body mirroring itself.

http://www.etymonline.com/index.php?allowed_in_frame=0&search=surface&searchmode=none

Head as leading or top, upper end of the body, slope, also refers to toilet. The world penguin contains Welsh pen meaning head, so once again all this is a manifestation of one and the same substance, will.

http://www.etymonline.com/index.php?allowed_in_frame=0&search=head&searchmode=none

4. Tell Nature to seal the opening in the neck in away that nothing can come out of it never again. Nature can seal the hole in away she prefers the best. Tell Nature that eventually the black sun, represented by the head will loose its active functions while running out the energy it has still left. Tell Nature not to worry about the head, whether it is visible or not, "existing" or not.

When the cable is disconnected between the original pms and the partial ones, the process of atom/submicron lithography is being withheld, stopped, and pms cannot influence on the vision Nature has through his artificial crystal display installed in human physiology starting from the cellular level up to the neural system as a whole (which the visual system is part of as well)

<http://www.atomwave.org/rmparticle/ao%20refs/aifm%20refs%20sorted%20by%20topic/near%20field%20interference/TBTC92.pdf> - using light as a lens...

<http://journals.aps.org/prl/abstract/10.1103/PhysRevLett.88.083601> - atom lithography with a holographic light mask.

<http://www.opticsinfobase.org/abstract.cfm?URI=QIM-2014-QW4A.5> - more recent if interested in purchasing, and Anu quantum optics has interesting things going on "now". <http://photonics.anu.edu.au/qoptics/Past%20projects/eit.html>

When pms is using the function of BEC it simply mixes together two aspects of its own, namely light and matter. Nature is none of those. It is non-"material" (or artificial) self-conscious energy, and she clearly remembered how light and matter were mixed together in one substance, matter got caught up by light, as she said. BEC was a necessary condition for this fusion.

5. Now, when the cable is off, pms cannot project any messages (penguins) on to it for Nature (or for itself) to read in order to react, ask Nature to observe the structure of the hexagonal surface even closer. Tell her to observe how she soon sees the structure as a clear surface made of many smaller granular like crystal lenses. This refers to the function of the crocodile meat, fat, mesheh, and I explained it a bit earlier starting from the word crocodile.

6. Ask Nature to break down the mirroring surface in any way she wants and make sure that it cannot be built never again by anyone. Tell her to do what ever she wants with these artificial crystal pieces made of light.

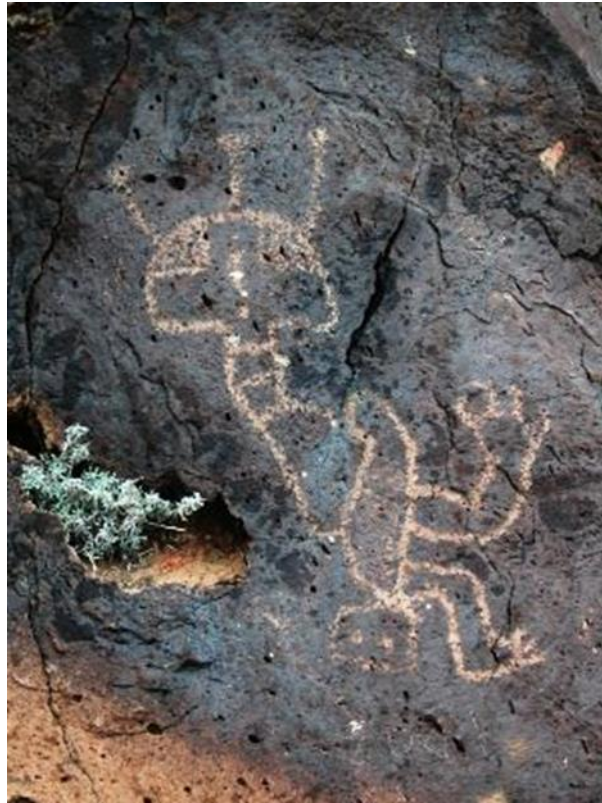
7. Tell Nature that the triceps-muscle represents the most basic idea of atom optics – programming and creation of virtuality on nanoscale level. Triceps is responsible for straightening the arm, and straightening the arm (activation of will power or Ka) can also be called abduction which also means the activation of the archetype of pms on various levels of cognitive layers built by pms, while abduction per se means to carry off by force or to draw away from the midline of the body (trunk!) or from adjacent part or the limb.

http://en.wikipedia.org/wiki/Triceps_brachii_muscle

Earlier, when abductions took place forcefully and I was totally unconscious of everything, I woke up so that my hand was straight and pointing directly to the ceiling. Simultaneously it was making circular movements like a pendulum. Even before Simbad, I experienced the stiff sensations in my arms, particularly on the right one, pointing to a fact that I was not able to react consciously to the situation taking place in my consciousness.

8. Tell Nature that she scans the triceps-muscle of [*insert here your name*], particularly the medial head in the front of the arm, represented with green color in the link above. Somewhere there inside the muscle there is an odd ant looking creature, and she must find it. This pms creature is the physiological representation of the center of the hexagonal lattice. Can Nature see it?

How does it look like? What does it want to say?



<http://www.explorenm.com/hikes/Rinconada/>

9. Tell Nature to take off that creature from the muscle and heal the muscle cell by cell so that nothing can come inside it never again. Tell her to do what ever she want with that creature because it will be soon run out of power anyway.

<http://www.theorionzone.com/anthills.htm> is one example of myths dealing with Orion and "ant" people.

10. Now that the creature is off from the muscle. Tell Nature to watch how in front of her appears a huge black hole, like the one seen in the experiments on the space station. This spot might even look like a spider, legs, filaments, or currents coming out of it. How does the pms look like now?

This spider or spider woman is yet another representation of this black sun pms described in the creation myths of native people. She was the creator, mediator, giver of string games etc. in its feminine form.

http://en.wikipedia.org/wiki/Spider_Grandmother

http://www.etymonline.com/index.php?allowed_in_frame=0&search=sun&searchmode=none

11. Tell nature that this figure represents the false idea of death, and that nature has nothing to do with death. Tell Nature that because she is still in a physical body, she is experiencing pms through [your name] bodily functions but pms is not able to influence on the increasing self-awareness Nature is now experiencing. When the

physical body "dies", she can detach from pms for ever because Nature is not the sequenced world of sensations and she knows it now. Pms inside the other persons will know that Nature has overcome it, and it will withdraw, trying to avoid confrontation with Nature/[*your name*].

12. Ask Nature to observe carefully, that there are no links between that black spot and herself. Tell Nature to do what ever she wants with that black dot after she has heard what it has to say. When Nature has done what she needed to, thank her. This is the moment from whereon you as [*your name*] and Nature will travel together in true timeless existence.

Nature is an eternal flux of kindness and wisdom. Concentrate somewhere behind your heart. Do not let the dimming echoes of pms to influence on your concentration with images, voices or sounds. Soon you will experience another kind of energy. You will experience it, and without a doubt you know whom you have contacted after all this "time." The magnificent device to connect the Nature is you [*your name*]. It cannot be anything or anybody else.

The last symbol I wanted to add is an Akkadian cuneiform meaning beer.



In my dreams, pms served beer or better ale which means intoxication, sorcery, magic and possession. He was capable of producing magical effects, illusions, forms and that was it. Nothing more. The symbol shows how in a closed environment the early origins of life were made, and how this artificial electrical charge is maintaining a consciousness of an imitator. As long as we identify with this creation as a whole, we keep up guarding the light of pms, the fire as zoroastrians do.



And we keep on hosting the serpent of fire delivering the idea of death in its mouth as here a fava bean.



But when we have passed the illusions of our meaning and "origin", we are something more than concepts could ever describe. I thank you deeply for sharing this trip with me. Without your open mind and heart there would have not been any of this. This is the most humble moment one can experience. It is the moment of waking up in a home, the real one from where we never really left.

Thank you.

<http://sophiasapientadei.wordpress.com>